



Mississippi Cancer Registry

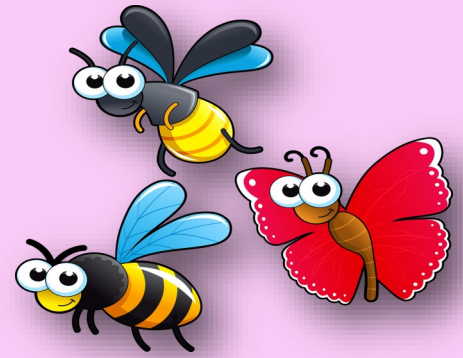
March 2021

Volume 16 Issue 1
Inside this issue:

Educational Corner	Upcoming Webinars CTR Exam dates
Educational Opportunities	MCR Staff
Abstracting Resources	

EDUCATIONAL CORNER

TOP 4 COMMON CODING ERRORS I SEE:



*Dates - If a patient is diagnosed at your facility the Date of First Contact and the Date of Diagnosis will **always** be the same date.

*Class of Case – The use of 00 and 10: **Code 00** if patient was diagnosed at your facility, received no treatment at your facility, and you know where patient went for treatment. **Code 10** if patient was diagnosed at your facility and you don't know where patient went for treatment or if some treatment was done at your facility but, unknown if it was all treatment.

*Grade – You can only code Pathological Grade if the Rules for Classification (Pathological Classification) have been met. For example: A TURBT would only give you a clinical grade. To have a pathological grade for the bladder a partial/radical cystectomy would need to have been performed. **You can only use Clinical Grade in the Pathological Grade field if surgery has been performed with no neoadjuvant treatment and the Clinical Grade is higher than the Pathological Grade.**

*Tumor Size – Code size on the surgical resection specimen, when surgery is administered as the first definitive treatment (no neoadjuvant therapy given). Example: Chest x-ray shows 3.5 cm mass; the pathology report from the surgery states that the same mass is malignant and measures 2.8 cm. Record tumor size as O28 (28 mm). **Remember to convert cm to mm when you record the size.** If neoadjuvant therapy is given, code size based off of the largest size given before any treatment. If no size is given code 999.

For any questions please contact: Angel Davis, adavis6@umc.edu

Educational Opportunities:

American College of Surgeons:

<https://www.facs.org/>

Go to Education

Online Education

Create an Account – once you have created an account - login

Go to Course Catalog & there are 3 courses geared towards Cancer Registrars:

AJCC Cervix Uteri Version 9 Cancer Staging System
AJCC yc Stage Classification: When & How to Use
Registrar's Guide to Updating Radiation Data Items

Just enroll in the course and complete for CE hours.

Himagine Solutions:

<https://himaginesolutions.com/>

Go to Webinars

Upcoming Tumor Talks – You can register for the next one available, you can earn CE credit for watching live.

Previous Webinars – You can watch the past webinars. You don't earn CE credit for watching the recordings but it is still great information.

You can only earn CE Hours for participating in the live webinars.

FLccSC

Fundamental Learning Collaborative for the Cancer Surveillance Community:

The FlccSC site has been updated with the past two NAACCR Webinars, don't miss out on these CE hours. If you have not yet registered you can do so at the link below.

mss.fcslms.med.miami.edu

For any questions contact: Angel Davis, adavis6@umc.edu



Abstracting Resources



AJCC Cancer Staging Manual

Cases with a diagnosis date of 01/01/2018 and forward should be staged using AJCC 8th Edition Cancer Staging Manual. The 3rd printing 2018 Edition is now available.

Please visit <https://cancerstaging.org/references-tools/deskreferences/Pages/8EUpdates.aspx#> for all 8th Edition updates and corrections. For all other information, visit <https://cancerstaging.org/Pages/default.aspx>.

Summary Stage 2018

The 2018 version of Summary Stage applies to every site and/or histology combination, including lymphomas and leukemias. Summary Stage uses all information available in the medical record; in other words, it is a combination of the most precise clinical and pathological documentation of the extent of disease. The Summary Stage 2018 manual is available at <https://seer.cancer.gov/tools/ssm/>.

Site Specific Data Items (SSDI)

Site Specific Data Items (SSDI) are similar to the Site Specific Factors (SSF) collected with Collaborative Stage. These data items are specific to certain site/histology combinations. For example, the SSDI's for breast will be used to collect information such as estrogen receptor status, progesterone receptor status, Her2 status, Nottingham grade, and additional information related to primary tumors of the breast. The information collected in these data items are specific to breast. The SSDI manual is available at <https://apps.naaccr.org/ssdi/list/>.

Grade

Beginning with cases diagnosed in 2018 grade information will be collected in three fields; Clinical Grade, Pathological Grade, and Post-Therapy Grade. Within the Grade Manual you will find definitions for the three new grade data items, coding instructions, and the site/histology specific grade tables. The Grade manual is available at <https://www.naaccr.org/SSDI/Grade-Manual.pdf?v=1527859766>.

SEER Hematopoietic and Lymphoid Neoplasm Database

This provides data collection rules for hematopoietic and lymphoid neoplasms for 2010+. The SEER Hematopoietic and Lymphoid Neoplasm manual is available at

https://seer.cancer.gov/tools/heme/Hematopoietic_Instructions_and_Rules.pdf.

2018 Solid Tumor Coding Manual

Use the 2018 Solid Tumor coding rules to determine the number of primaries to abstract and the histology to code for cases diagnosed 2018 and forward. The Solid Tumor coding rules replace the 2007 Multiple Primary and Histology (MP/H) Rules. The manual is available at <https://seer.cancer.gov/tools/solidtumor/>. The **change log** contains updates made to the FINAL module sections. This does not include changes made to the drafts.

CoC 2018 STORE Manual

The STORE Manual has replaced the FORDS Manual. The STORE is now available at <https://www.facs.org/quality-programs/cancer/ncdb/registrymanuals/cocmanuals>.

Upcoming Webinars



4/1/21 Larynx 2021

-Denise Harrison, CTR

-Louanne Currence, RHIT, CTR

5/6/21 Pancreas 2021

-Jim Hofferkamp, CTR

For more information contact: Angel Davis, adavis6@umc.edu

CTR Exams



2021 EXAM TESTING WINDOWS

June 18– July 10, 2021; application deadline: June 4

October 15– November 6, 2021; application deadline: October 1

For more information visit: www.ncra-usa.org/CTR

MCR Staff



Director UMMC & MCR: Deirdre Rogers, dbrogers@umc.edu

MCR Manager: La'Tawnya Roby, ldroby@umc.edu

Clinical Systems Analyst-Intermediate: Tresheena Boyd, tboyd@umc.edu

Data Quality Analyst-Trainer: Angel Davis, adavis6@umc.edu

Data Quality Analyst-Auditor: April Huggins, ahuggins@umc.edu

Electronic Data Source Coordinator: Lisa Hamel, lhamel@umc.edu

Cancer Registrars:

Stacy Major, semajor@umc.edu

Stephanie N. Engelman, nengelman@umc.edu

LaToya Bogan, lbogan@umc.edu

Cameron Proctor, cproctor@umc.edu

Administrative Assistant:

Ophelia Spencer, ospencer@umc.edu



**University of MS Medical Center
2500 North State Street
Jackson, MS 39216
Phone: 601-815-5482
Fax: 601-815-5483**